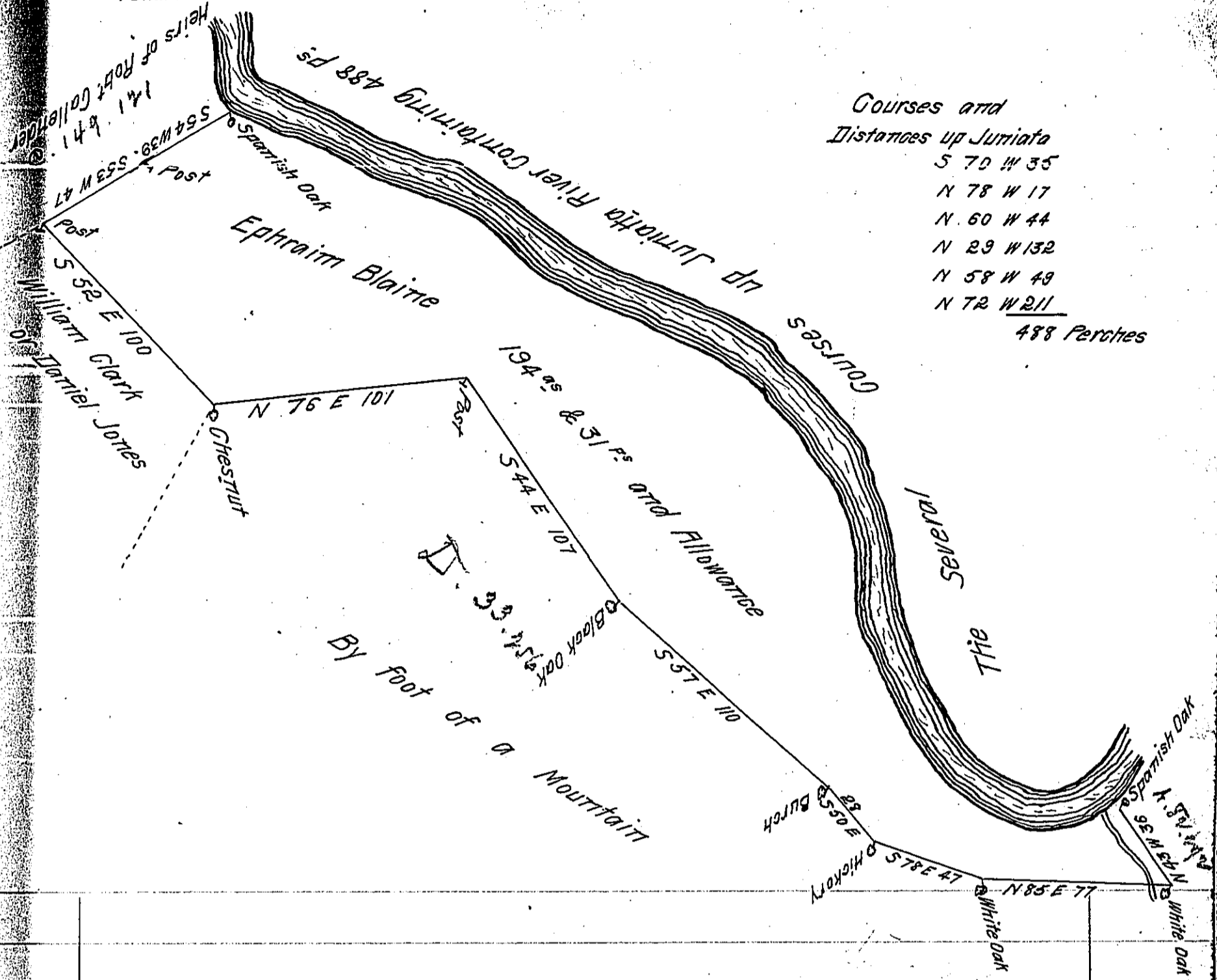


FORM NO. 1.



*The Draught of a Tract of Land Situate in Derry Township
 Cumberland County Containing One hundred and thirty four Acres and thirty one
 perches and the usual Allowance of Six P Cent for Roads &c Surveyed
 for Ephraim Blaine the 18th Day of September 1781 in Pursuance of
 an Order of Survey bearing Date the first Day of August 1766 and
 Numbered 315*

*To John Lukens Esquire
 Surveyor General*

Samuel Lyott D.S.

*IN TESTIMONY that the above is a copy of the original remaining on file in
 the Department of Internal Affairs of Pennsylvania, made
 conformably to an Act of Assembly approved the 16th day of
 February, 1833, I have hereunto set my Hand and caused
 the Seal of said Department to be affixed at Harrisburg,
 this sixteenth day of June 1911*

Henry Houck
 Secretary of Internal Affairs.